



4 STROKE PETROL POST DRIVER 120MM

24811

INSTRUCTION MANUAL

www.monstershop.co.uk



SPECIFICATION

PRODUCT DESCRIPTION

Thank you for purchasing our 4 Stroke Petrol Post Driver. With its large piling diameter of up to 120mm, this post driver will be able to handle any number of fence posts, stakes and pegs and drive them into the ground in a matter of seconds.

Please Note: The 4 Stroke Petrol Post Driver is designed to be used by a competent person. Personal Protective Equipment (PPE) must be worn by the operator of this equipment.

Please refer to and read the Safe Working Practice to ensure prevention of injury or damage to the device before starting.

PRODUCT SPECIFICS

FUEL:	Petrol
ENGINE:	4-Stroke
DISPLACEMENT CAPACITY:	37.7CC
FUEL TANK CAPACITY:	0.58l
OIL CAPACITY:	0.08l
MAX. POST DIAMETER:	100-120mm
MAX. POWER & SPEED:	1kw / 6500r/min
MAX. TORQUE & SPEED:	1.63N.m / 5500(r/min)
IMPACT FREQUENCY:	820-1200RPM
IMPACT ENERGY:	25-50J
FUEL CONSUMPTION:	<480g/Kwh

ITEM CONTENTS

- 1 x 60 - 78mm Piling Socket
- 1 x 120mm Piling Socket
- 1 x PPE
- 1 x Tool Kit

SPECIFICATION

PRODUCT FEATURES

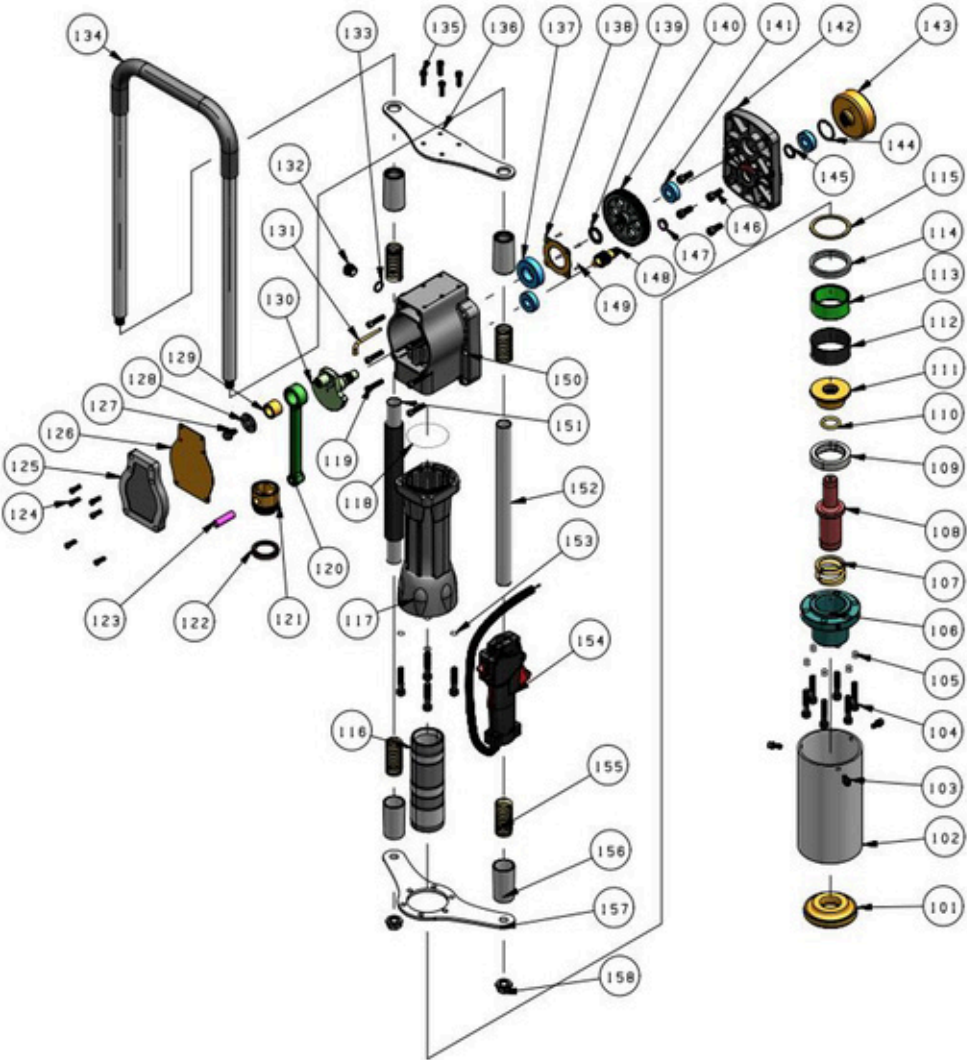
- | | | |
|----------------------|--------------------|-------------------|
| A. Handle | E. Fuel Tank | I. Throttle Cable |
| B. Spark Plug | F. Hammer Casing | J. Piling Socket |
| C. Air Filter | G. Stop Switch | |
| D. Starter pull cord | H. Throttle Switch | |



Monster Group UK Limited's liability will be limited to the commercial value of the product only.

SPECIFICATION

PRODUCT FEATURES



USER GUIDE

ASSEMBLY INSTRUCTIONS

FUELING

1. Add petrol to the fuel tank in a well ventilated place. Do not overfill the tank.
2. Once fuelled, make sure the fuel cap is tightly shut

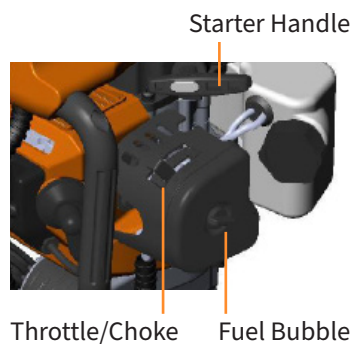
CHANGING PILING SOCKET

The Post Driver comes with the 120mm attachment already on, if you want to change this:

1. Simply unscrew the attachment.
2. Remove from the Post Driver.
3. Screw the 60 - 78mm attachment on the thread until tight.

STARTING THE ENGINE

1. Before starting the engine, repeatedly press the transparent semicircular fuel oil bubble to fill the carburetor with fuel. When the engine is cool, close the air filter, open after starting.
2. Position the machine upright, hold the upper part of the handle tightly with one hand while the other quickly pulls the starting handle 50cm away from the engine. Do not let go of the starter handle as a rebound of the starter handle will cause damage to the engine.
3. After starting the engine, completely open the air filter.



USER GUIDE

OPERATING INSTRUCTIONS

RUNNING THE ENGINE

1. Allow the engine to run for 3 to 5 minutes before using the Hammer Drill breaker, the engine needs to preheat before use.
2. Once the engine is heated, press the trigger to gain the speed required for your job.

Please Note: For the first use, use the machine in a low speed to prolong the life of the Hammer Drill Breaker.

Please Note: Do not leave the Hammer Drill Breaker on full throttle whilst not in use. This could damage the engine.

STOPPING THE ENGINE

1. Allow the engine to be idle for 3 to 5 minutes.
2. Pull the Stop Switch to the off position.

MAINTENANCE

SPARK PLUG

To ensure a constant engine efficiency, the carbon deposit on the spark plug needs cleaning regularly.

MUFFLER

Routinely clean the muffler using mild detergent and warm water.

LUBRICATION OF IMPACT CYLINDER

Regularly check the engine has enough oil in the oil filler tank, if the engine does not, refill as this can cause damage to the engine.

Remove the oil filler cap, refill the oil and then return the oil filler cap.

USER GUIDE

MAINTENANCE

AIR FILTER

Check the air filter regularly. Dust in the air filter cartridge will reduce engine power and shorten the life of the filter.

To clean the filter, use warm water and mild detergent. Dry with a cloth before putting the filter back into the engine.

If the filter is broken or damaged, it must be replaced.

FUEL FILTER

If there is a fuel filter blockage, the machine's speed will be reduced, so too will the efficiency.

Open the lid of the fuel tank, with a metal hook, hook out the fuel filter and clean away any blockages. Clean the fuel tank as well.

If the filter is broken or damaged, it must be replaced.



CARBURETOR

The fuel tank and carburetor often have residual oil, this residual oil can cause issues when starting the engine.

When the machine will not be used for more than one week, drain the fuel tank of fuel.

Pull out the oil inlet pipe, press the rubber fuel bubble repeatedly to remove all the fuel.

Replace all parts once the engine is drained.

CYLINDER HEAT SINK

Regularly remove dust to ensure the cylinder can cool properly, if there is a build up of dust or fibres, the engine could overheat and cause damage.

USER GUIDE

MAINTENANCE

We recommend the Petrol Hammer Drill Breaker is regularly maintained before and after use, this will prevent damage to the machine.

		Before Use	After Work of Every Day	After Filling Oil	Every Week	Every Month	Broken Down	If Necessary
WHOLE MACHINE	Outlook check (state, stabilities of screws)	●		●				
	Cleaning		●					
CONTROL HANDLE/ STOP BUTTON	Function Check	●		●				
AIR FILTER	Clean				●			●
	Replace						●	
FUEL FILTER	Check					●		
	Replace						●	
OIL TANK/OIL TANK COVER	Clean		●	●				
	Check	●		●				
	Tighten							●
REDUCTION GEARBOX/ IMPACT CYLINDER	Clean					●		
	Add Oil							●
MUFFLER	Check					●		
	Clean Carbon Deposit							●
CYLINDER COOLING FIN	Check					●		
	Clean							●
SPARK PLUG	Check/Adjust Customise the distance between electrodes					●		
	Replace							●
SCREW AND NUT	Check	●		●				
	Tighten							●